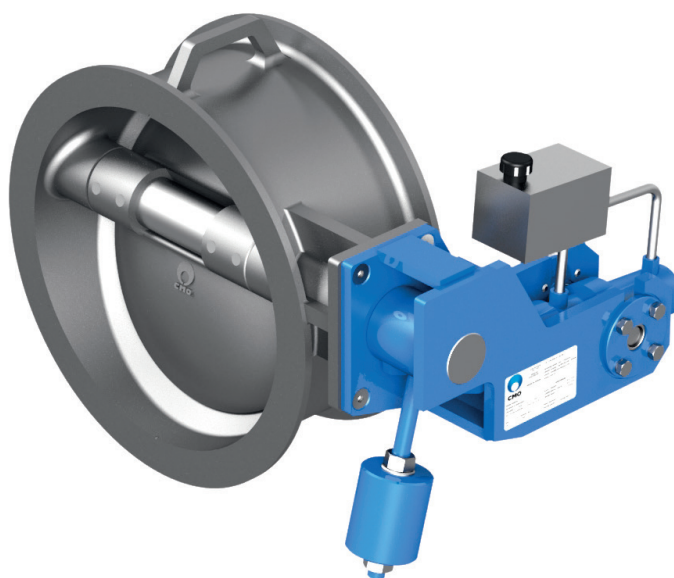


# R SERIES

## UNIDIRECTIONAL WAFER TYPE CHECK VALVE



## R SERIES

### DESCRIPTION

- Wafer type swing disk check valve type (can be manufactured with flanges on request).
- One-piece cast body with an internal conical shape which provides easy evacuation of the solid particles contained in the flow.
- High flow rates with low load losses.
- Low pressure opening
- Face-to-face distance in accordance with **CMO Valves** standards.
- It has an arrow on the body indicating the flow direction.
- The **R** swing check valve only lets fluid through in one direction. It is opened by the fluid passing through and it closes due to the weight of the disc and the return of the fluid in a short time.

### SIZES

DN50 to DN1200.

*Other DN's on request.*

### GENERAL APPLICATIONS

This check valve is suitable for liquids that contain a maximum of 5% suspended solids.

Designed for a wide range of applications such as:

- Paper industry.
- Sewage treatment.
- Chemical plants.
- Pumping.

### FLANGE DRILLING

Valid for all types of installations with standard flanges

### WORKING PRESSURE ( $\Delta P$ )

DN50-DN250	40 bar
DN300-DN600	25 bar
DN700-DN1200	16 bar

*Other pressures on request.*

### ACCESSORIES AND OPTIONS

- Counterweight and/or shock absorber.
- It can be supplied with an auxiliary spring to obtain faster sealing.
- Flanged manufacturing.

### DIRECTIVES

See document of directives applicable to **CMO Valves**.



*For Ex applications (ATEX), information on categories and zones please contact **CMO Valves**. Technical-Commercial Department.*

### QUALITY DOSSIER

All valves are tested hydrostatically at **CMO Valves** according to our manufacturing and quality protocols, material and test certificates can be provided.

- Body test = working pressure x 1.5.
- Seal test = working pressure x 1.1.

As part of a process of on-going product and service development, **CMO Valves** reserves the right to amend and change the data and content of this document at its discretion at any time without notice. The publication of the latest revision renders all previous documents invalid.

Installation and Maintenance Manual available at [www.cmovalves.com](http://www.cmovalves.com).