

TD SERIES

UNIDIRECTIONAL DOUBLE GATE KNIFE GATE VALVE

DESCRIPTION

- Knife gate valve, unidirectional Wafer design and very fast opening and closing.
- Both body composed of two screwed halves, with sliders to provide a smooth manoeuvre.
- It has two opposing stainless steel gates which come together in the centre of the opening and all its components subject to wear and tear are easy to replace.
- Provides high flow rates with low pressure drops.
- Various constructions materials and seal and stuffing materials available.
- Face-to-face distance in accordance with **CMO Valves** standards.

GENERAL APPLICATIONS

This knife gate valve has been designed to work in the most demanding conditions. They are generally used in the paper industry in pulp mills, water treatment plants.

Designed for applications such as:

- Paper industry.
- Mining.
- Chemical plants.
- Water treatment plants.
- Food industry.
- Water treatment.

WORKING PRESSURE (ΔP)

DN50-DN250	10 bar
DN300-DN400	6 bar
DN450	5 bar
DN500-DN600	4 bar
DN700	3 bar
DN800-DN1200	2 bar

Other pressures on request.

Indicated work pressures will only be valid following the direction of the arrow marked on the valve. Due to the valve's design with gate support guides, 30% of these pressures can be applied in the opposite direction to the arrow without causing any damage to it. In these circumstances the valve is not watertight. An additional series of supports is necessary in order to achieve tightness in these conditions.

SIZES

From DN50 to DN1200.

Other DN's on request.

FLANGE DRILLING

- EN1092 PN10.
- ASME B16.5 (class 150).

OTHERS COMMONLY USED

- PN6.
- PN16.
- PN25.
- JIS standard.
- Australian standard.
- British standard.

Others on request.

RESILIENT SEALS

- EPDM.
- NITRILE.
- FKM.
- SILICONE.
- PTFE.

Various materials are available for the reinforced socket and the deflector (CA-15, CF8M and Ni-hard...).

DIRECTIVES

See document of directives applicable to **CMO Valves**.

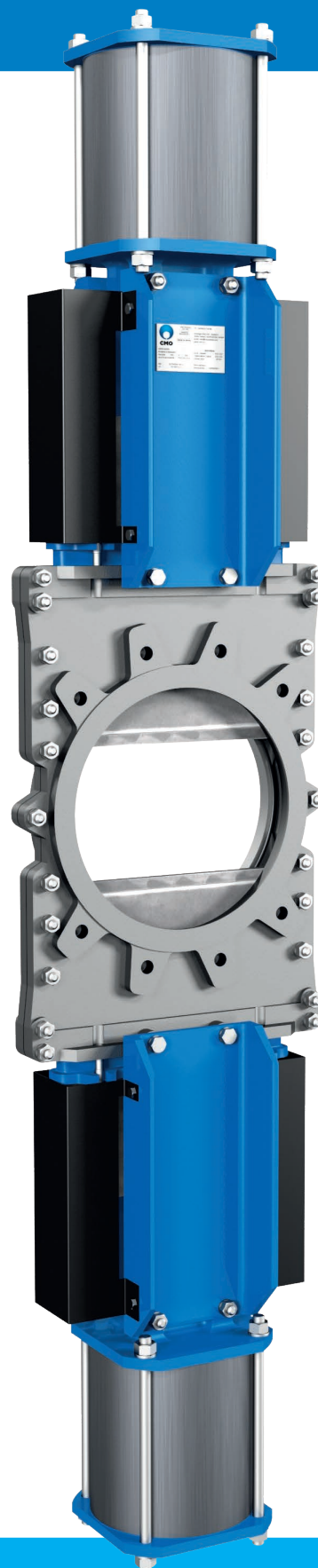


*For further information on categories and zones please contact **CMO Valves**. Technical-Commercial Department.*

QUALITY DOSSIER

All valves are tested hydrostatically at **CMO Valves** and material and test certificates can be provided.

- Body test = working pressure x 1.5.
- Seal test = working pressure x 1.1.

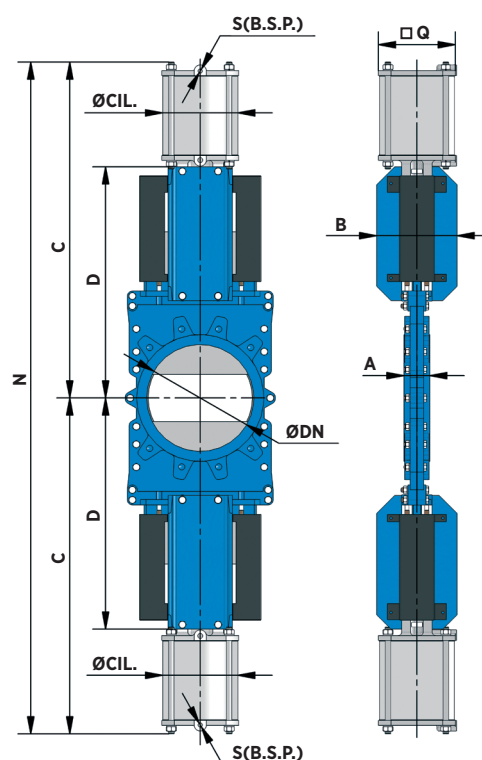


TD SERIES

MANUFACTURING RANGE

DOUBLE-ACTING PNEUMATIC CYLINDER

DN	ΔP (bar)	A	B	C	D	N	Q	ØCIL	ØV	S (B.S.P.)
50	10	40	92	370	235	740	96	80	20	1/4"
65	10	40	92	398	256	796	96	80	20	1/4"
80	10	50	92	435	285	870	96	80	20	1/4"
100	10	50	92	493	328	985	110	100	20	1/4"
125	10	50	92	548	371	1095	110	100	20	1/4"
150	10	60	102	595	395	1190	135	125	25	1/4"
200	10	60	119	730	495	1460	170	160	30	1/4"
250	10	70	119	855	585	1710	215	200	30	3/8"
300	6	70	119	937	645	1874	215	200	30	3/8"
350	6	96	290	1098	705	2195	270	250	40	3/8"
400	6	100	290	1215	790	2429	270	250	40	3/8"
450	5	106	290	1318	850	2635	382	300	45	1/2"
500	4	110	290	1420	930	2840	382	300	45	1/2"
600	4	110	290	1590	1055	3180	382	300	45	1/2"
700	3	110	290	1880	1260	3760	444	350	45	1/2"
800	2	110	290	2034	1365	4067	444	350	45	1/2"
900	2	110	350	2208	1475	4415	508	400	50	1/2"
1000	2	110	350	2378	1595	4756	508	400	50	1/2"
1100	2	150	350	2548	1720	5095	508	400	50	1/2"
1200	2	150	400	2765	1885	5530	508	400	50	1/2"



KNIFE GATE VALVES

02

SINGLE-ACTING PNEUMATIC CYLINDER

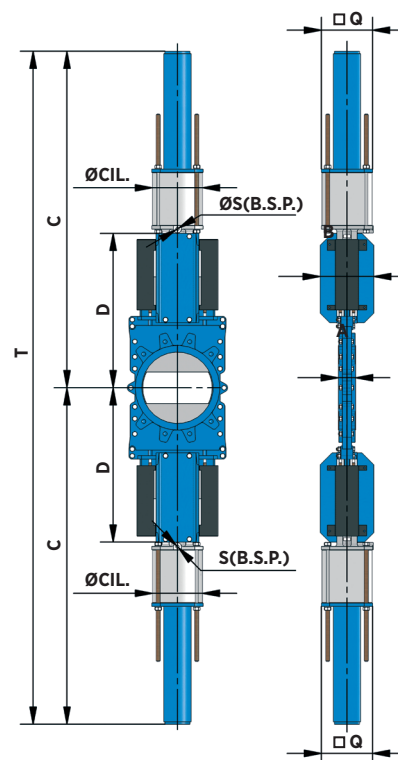
DN	ΔP (bar)	A	B	C	D	T	Q	ØCIL	ØV	S (B.S.P.)
50	10	40	92	660	235	1320	135	125	25	1/4"
65	10	40	92	688	256	1376	135	125	25	1/4"
80	10	50	92	725	285	1450	135	125	25	1/4"
100	10	50	92	785	328	1570	135	125	25	1/4"
125	10	50	92	840	371	1680	135	125	25	1/4"
150	10	60	102	850	395	1700	170	160	30	1/4"
200	10	60	119	1225	495	2450	215	200	30	3/8"
250	10	70	119	1660	585	3320	270	250	40	3/8"
300	6	70	119	1742	645	3484	270	250	40	3/8"

The most habitual actuators are those detailed on the tables on previous pages with their respective dimensions, operations with two double-acting pneumatic cylinders and operations with two single-acting pneumatic cylinders. Although they can be supplied with other actuators, for example with a manual handwheel, geared, electric motor or hydraulics. What they do have in common is that each valve requires two actuators as this type of valve in particular has two knives.

If you wish the valve to have one of these actuators, please request information regarding dimensions and characteristics from the technical-commercial department at **CMO Valves**.

No obligation consultation on dimensions and drawings. **CMO Valves** reserves the right to modify them at any time, at its discretion and without prior notice.

Larger sizes on request.



www.cmovalves.com/valves



Visit our website to see the full features of the TD Series.

INFORMATION ON FLANGE DIMENSIONS

EN 1092-2 PN10

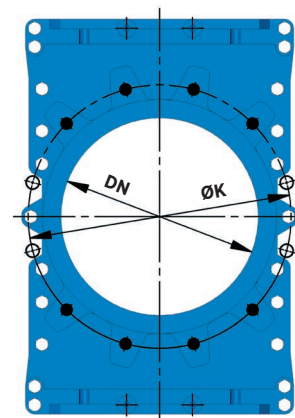
FLANGE DRILLING - TD

DN	●	○	R	p	ØK
50	4	-	M 16	8	125
65	4	-	M 16	8	145
80	4	4	M 16	9	160
100	4	4	M 16	9	180
125	4	4	M 16	9	210
150	4	4	M 20	10	240
200	4	4	M 20	10	295
250	8	4	M 20	12	350
300	8	4	M 20	12	400
350	12	4	M 20	21	460
400	12	4	M 24	21	515
450	16	4	M 24	22	565
500	16	4	M 24	22	620
600	16	4	M 27	22	725
700	20	4	M 27	22	840
800	20	4	M 30	22	950
900	24	4	M 30	20	1050
1000	24	4	M 33	20	1160
1100	28	4	M 33	20	1270
1200	28	4	M 36	22	1380

Larger sizes on request.

● Threaded holes.

○ Through holes.



ANSI B16, class 150

FLANGE DRILLING - TD

DN	●	○	R UNC	p	ØK
2"	4	-	5/8"	8	120,6
2 1/2"	4	-	5/8"	8	139,7
3"	4	-	5/8"	9	152,4
4"	4	4	5/8"	9	190,5
5"	4	4	3/4"	9	215,9
6"	4	4	3/4"	10	241,3
8"	4	4	3/4"	10	298,4
10"	8	4	7/8"	12	361,9
12"	8	4	7/8"	12	431,8
14"	8	4	1"	21	476,2
16"	12	4	1"	21	539,7
18"	12	4	1 1/8"	22	577,8
20"	16	4	1 1/8"	22	635
24"	16	4	1 1/4"	22	749,3
28"	24	4	1 1/4"	22	863,6
32"	24	4	1 1/4"	22	977,9
36"	28	4	1 1/2"	20	1085,9
40"	32	4	1 1/2"	20	1200,2

Larger sizes on request.

● Threaded holes.

○ Through holes.

